



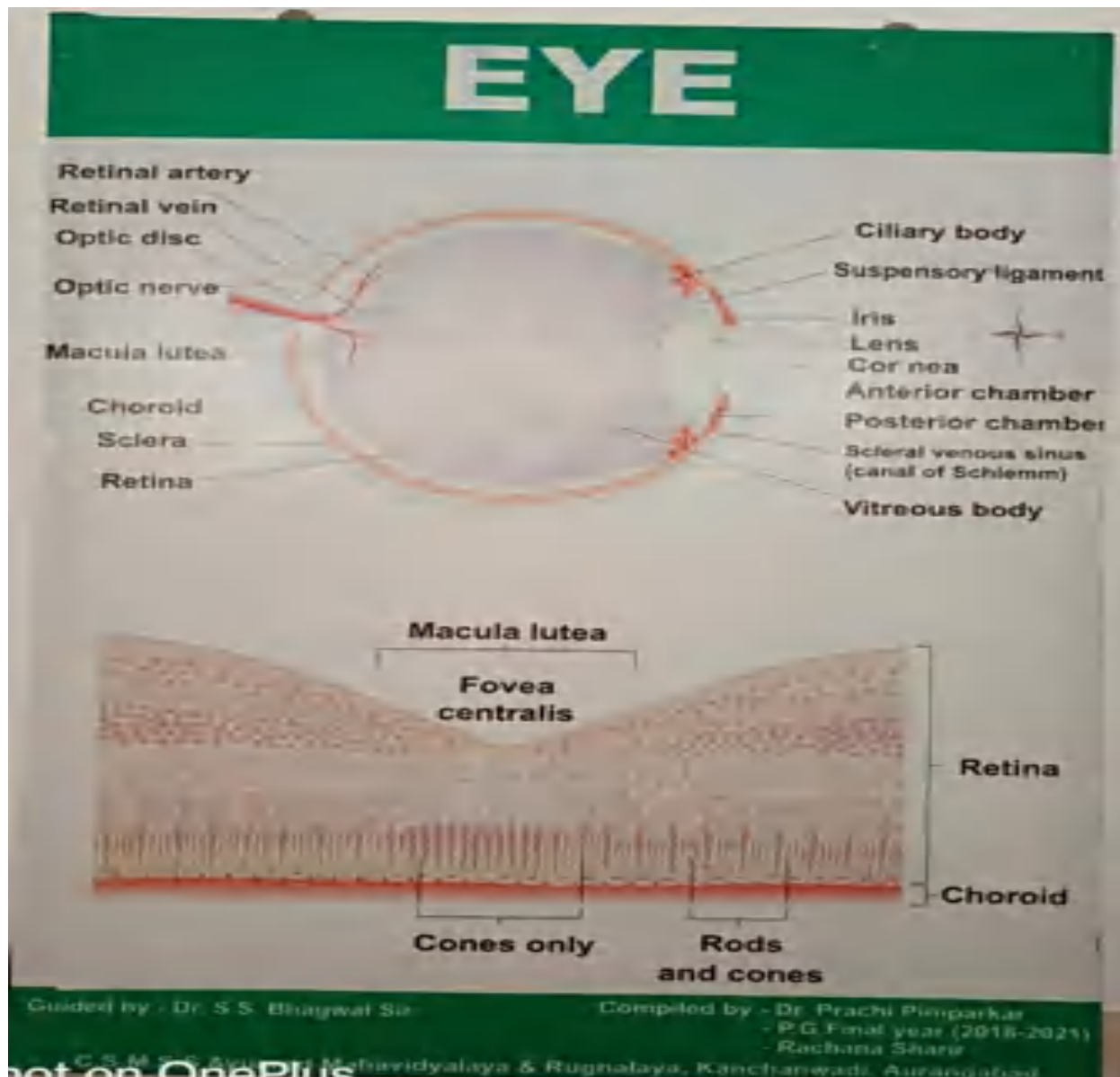
The teaching learning process of the institution nurtures creativity, analytical skills and innovation among students.

INDEX

Sr. No.	DOCUMENT DETAILS
1	CHARTS BY ANATOMY DEPARTMENT BAMS FIRST YEAR STUDENT - EYE
2	CHARTS BY ANATOMY DEPARTMENT BAMS FIRST YEAR STUDENT-CERVICAL VERTEBRAE
3	CHARTS BY ANATOMY DEPARTMENT BAMS FIRST YEAR STUDENT- CEREBRUM
4	CHARTS BY ANATOMY DEPARTMENT BAMS FIRST YEAR STUDENT-SPINAL CORD
5	CHARTS BY ANATOMY DEPARTMENT BAMS FIRST YEAR STUDENT-ENDOCRINE GLAND
6	KAUMARBHRITYA SHLOKAWALI
7	GUEST LECTURE TO DEVELOPE CREATIVITY AND INNOVATION- PHOTOGRAPHS
8	GUEST LECTURE TO DEVELOP COMPUTER SKILLS-PHOTOGRAPH
9	DEMONSTRATION OF BASIC LIFE SUPPORT TECHNIQUE-PHOTOGRAPH
10	SANSKRIT DRAMA-PHOTOGRAPHS



CHARTS BY ANATOMY DEPARTMENT BAMS FIRST YEAR STUDENT





CERVICAL VERTEBRAE

ATYPICAL CERVICAL VERTEBRA

Anterior aspect

Facet for articulation with inferior articular process of axis

Facet for articulation with inferior articular process of axis

Posterior tubercle representing spine

Vertical groove for transverse process

1st ATLAS

Anterior aspect

Superior articular process

Inferior articular process

Transverse process

2nd AXIS

Superior articular process

Transverse process

Chordae

Intervertebral foramen

Spinous process

Superior articular process

Intervertebral foramen

Transverse process

Chordae

Intervertebral foramen

Spinous process

7 Cervical Vertebra

Anterior aspect

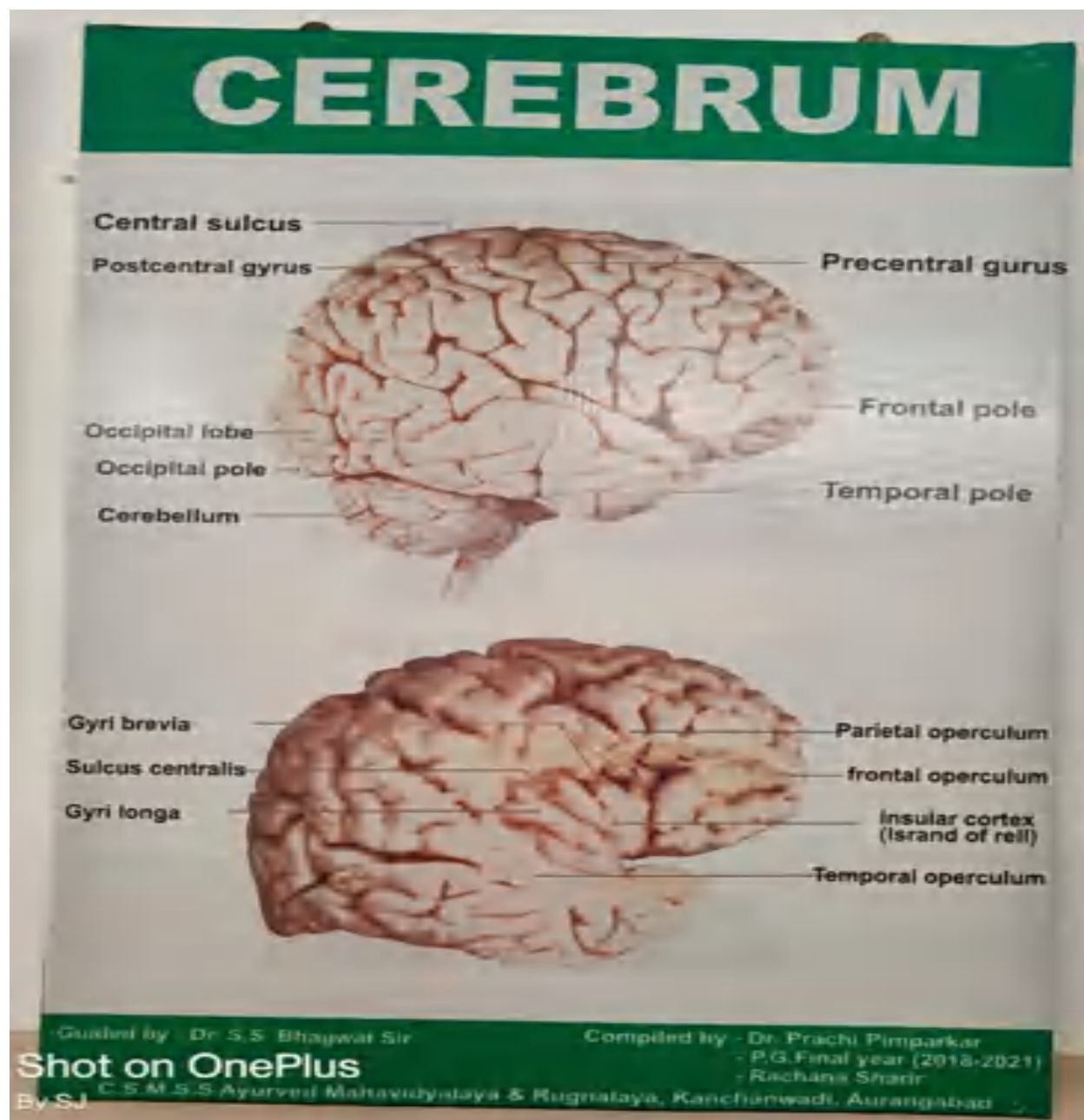
A cervical vertebra, showing typical features

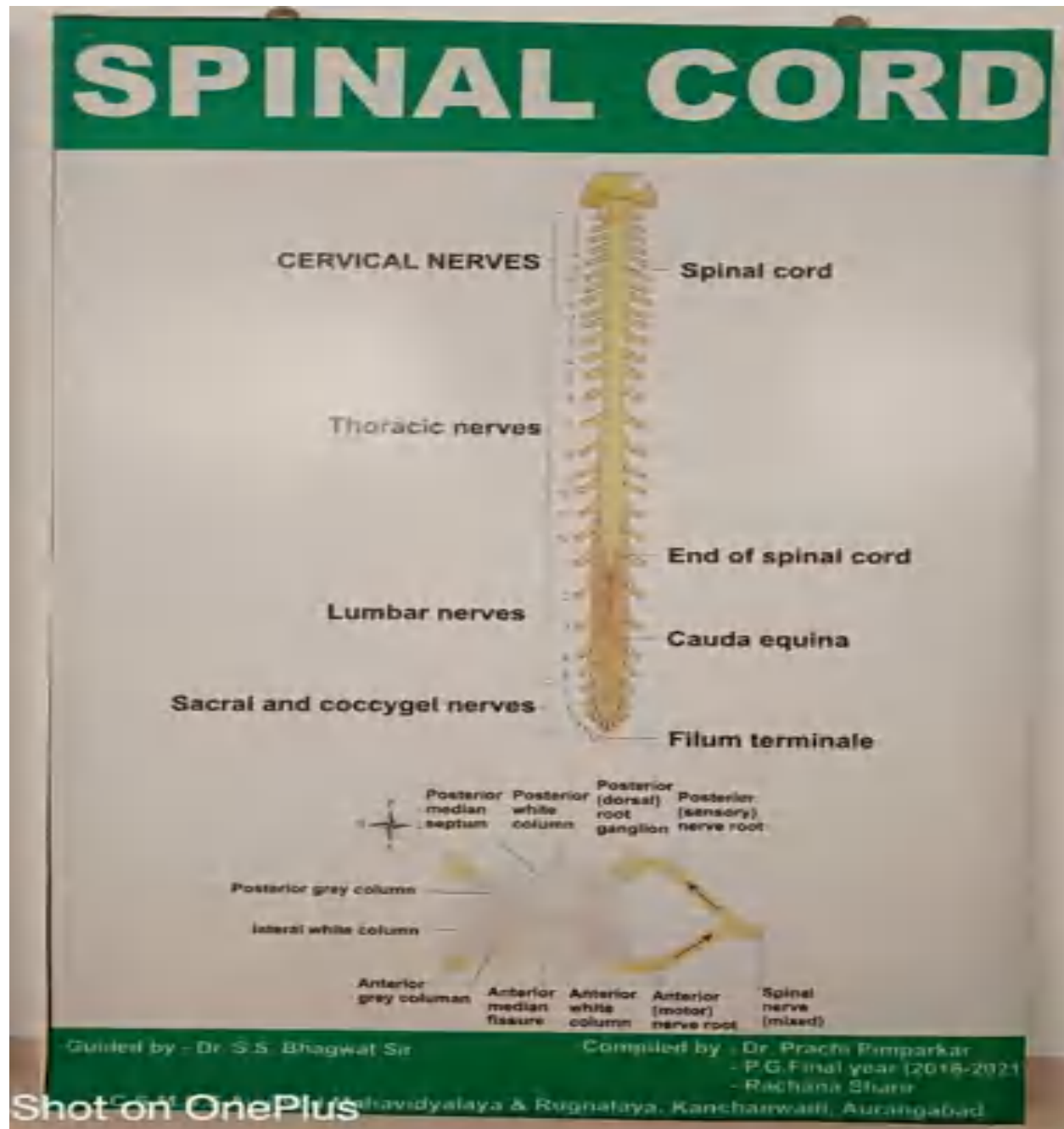
TYPICAL CERVICAL VERTEBRA (3rd, 4th, 5th, 6th)

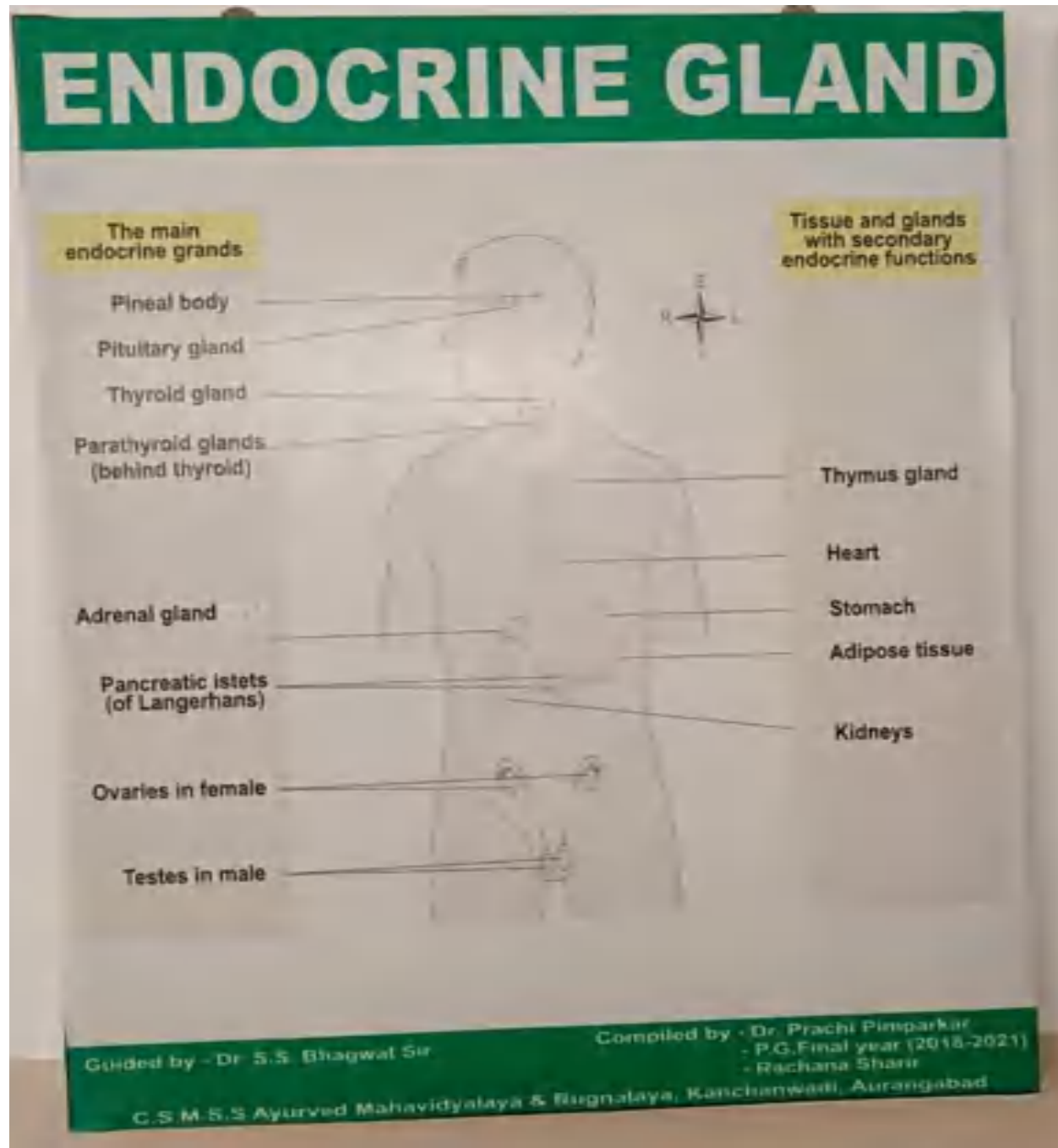
Guided by - Dr. S.S. Bhagwat Sir

Compiled by - Dr. Prachi Pimparkar
- P.G. Final year (2018-2021)
- Rachana Shani

C.S.M.S.S Ayurved Mahavidyalaya & Rughalaya, Kanchanwadi, Aurangabad









Chhatrapati Shahu Maharaj Shikshan Sanstha's
Ayurved Mahavidyalaya & Rughalaya
Kanchanwadi, Aurangabad



PROJECT BY KAUMARBHRITYA DEPARTMENT BAMS THIRD YEAR STUDENT

Kaumarbhritya - Shlokawali

Project By- Pre MD 2020-2021

Department of Kaumarbhritya

**Chhatrapati Shahu Maharaj Shikshan Sanstha's Ayurved Mahavidyalaya
and Rughalaya Kanchanwadi, Aurangabad**

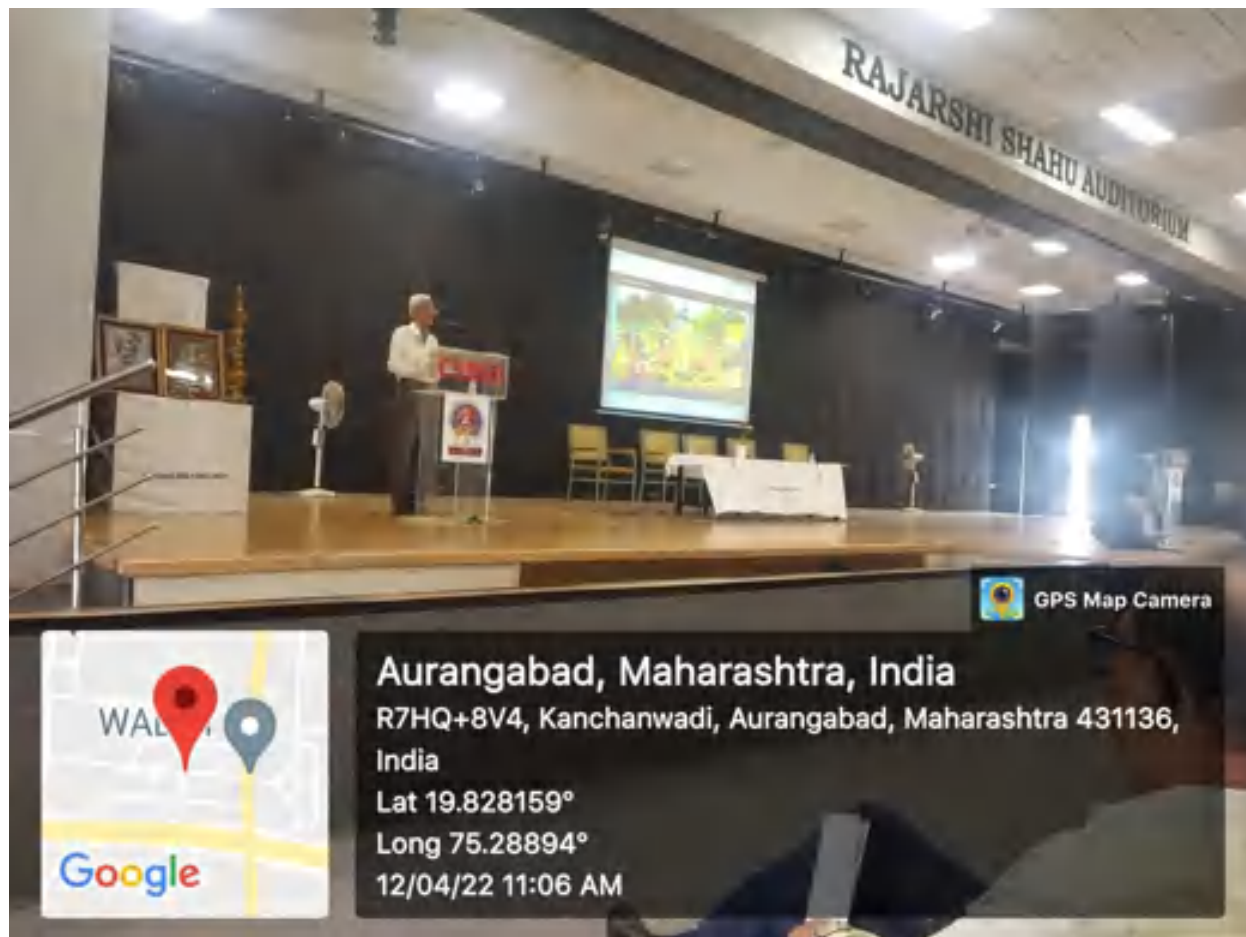
**Project Head – Dr. Karuna S. Ratnaparkhi
Professor and H.O.D Kaumarbhritya Department**



Chhatrapati Shahu Maharaj Shikshan Sanstha's
Ayurved Mahavidyalaya & Rughalaya
Kanchanwadi, Aurangabad



GUEST LECTURE TO DEVELOPE CREATIVITY AND INNOVATION AMONG BAMS FIRST YEAR STUDENTS





Chhatrapati Shahu Maharaj Shikshan Sanstha's
Ayurved Mahavidyalaya & Rughalaya
Kanchanwadi, Aurangabad



**GUEST LECTURE BY PROF. ABHANG SIR TO DEVELOPE COMPUTER SKILLS AND ITS USE IN
AYURVED**





**DEMONSTRATION OF BASIC LIFE SUPPORT TECHNIQUE TO BAMS FIRST YEAR STUDENT ON
SIMULATION**





Chhatrapati Shahu Maharaj Shikshan Sanstha's
Ayurved Mahavidyalaya & Rughnalya
Kanchanwadi, Aurangabad



SANSKRIT DRAMA BY BAMS FIRST YEAR STUDENTS

